

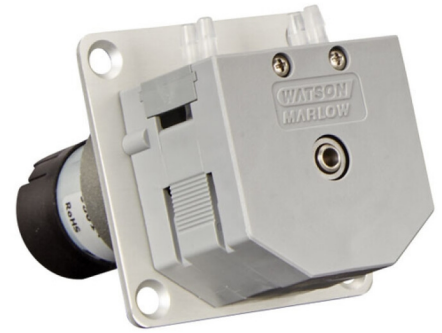
400FD/N2

400/M series panel mount pumps



Features and benefits

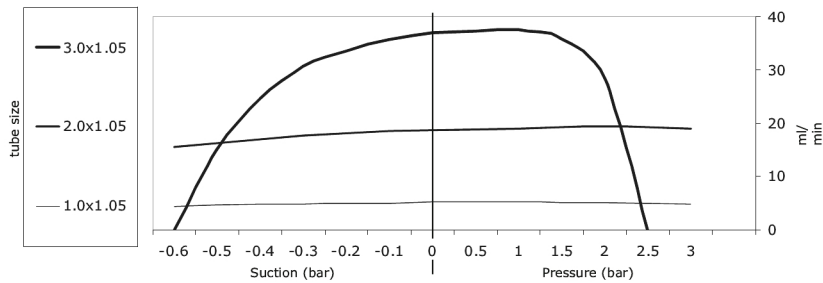
- 2 channel compact pump design
- 400/M works with 1.6 mm wall thickness tubing and Luer connectors
- 400/N works with 1.0 mm wall thickness tubing and barbed fittings
- Complete pump with motor, or as pumphead only
- Pumphead available in PVDF for greater chemical compatibility



400FD/N2 performance

Flow rates (ml/min) 1.6 mm wall tubing													
Tube bore (mm)	Speed (rpm)												
	4	5	10	12	20	25	40	70	75	100	160	200	270
0.5	0.05	0.07	0.13	0.16	0.26	0.33	0.52	0.93	1.0	1.3	2.09	2.6	3.58
1.0	0.2	0.25	0.5	0.6	1.0	1.3	2.0	3.54	3.8	5.0	8.0	10	12.8
2.0	0.72	0.9	1.8	2.2	3.6	4.5	7.2	12.2	13	18	28.6	36	48.6
3.0	1.3	1.7	3.3	4.0	6.6	8.3	13	23.2	25	33	52.9	66	88.4

Suction/Pressure chart



Technical specifications

	400FD/N2
Motor types	Fixed speed DC motor
Pumphead options	N2
Pumphead number of channels	2
Supply voltage	24VDC
Power consumption	5W
Operating temperature range	-10 to 45 °C
Compatible tubing bore size	0.5, 1, 2, 3 mm
Compatible tubing wall thickness	1 mm

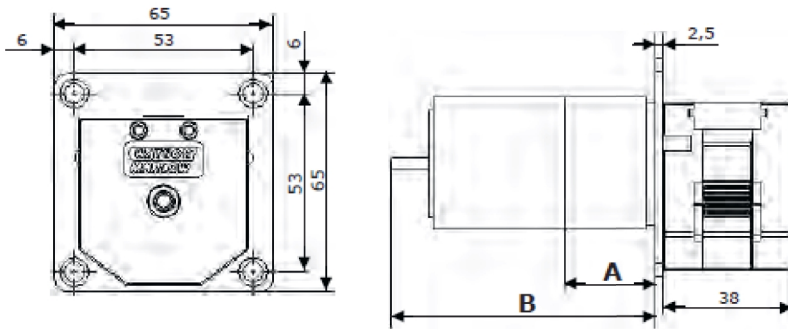
Materials of construction

	400FD/N2
Pumphead rotor assembly	Acetal (black), Stainless steel
Pumphead roller assembly	Acetal (black)
Pumphead track	Acetal (gray)
Face plate	Anodized aluminum
Drive shaft	Acid resistant stainless steel

Information listed covers the complete range.

For detailed specifications of individual models/components refer to user manual or contact WMFTS representative.

400FD/N2 dimensions



Motor type	400FD/N2 5 W
Dimension A	L=26.5 mm x Ø 39.6 mm
Dimension B	L=85.3 mm* x Ø 39.6 mm

*=maximum length behind mounting plate

Product codes

Pump product codes			
Motor type	Voltage	Speed (rpm)	Product code
Standard DC 5 W	24-30 VDC	200	040.ES1N.N2C
Standard DC 5 W	24-30 VDC	100	040.EP1N.N2C
Standard DC 5 W	24-30 VDC	40	040.EH1N.N2C
Standard DC 5 W	24-30 VDC	12	040.E81N.N2C
Economy DC 5 W	24 VDC	200	040.BS1N.N2C
Economy DC 5 W	24 VDC	75	040.BN1N.N2C
Economy DC 5 W	24 VDC	25	040.BC1N.N2C
Brushless DC 5 W	24 VDC	270	040.FT1N.N2C
Brushless DC 5 W	24 VDC	160	040.FQ1N.N2C
Brushless DC 5 W	24 VDC	70	040.FK1N.N2C
Brushless DC 5 W	24 VDC	20	040.F91N.N2C
SYNCHRONOUS AV 2 W	110 VAC (60 Hz)	25	040.HC1N.N2C
SYNCHRONOUS AV 2 W	220 VAC (50 Hz)	20	040.JA1N.N2C
SYNCHRONOUS AV 2 W	110 VAC (60 Hz)	12	040.H81N.N2C
SYNCHRONOUS AV 2 W	220 VAC (50 Hz)	10	040.J71N.N2C
SYNCHRONOUS AV 2 W	110 VAC (60 Hz)	5	040.H41N.N2C
SYNCHRONOUS AV 2 W	220 VAC (50 Hz)	4	040.J31N.N2C
Tubing product codes			
Bore/Wall	Bioprene	Peroxide cured Silicone	Connects to
0.5/1.0 mm	049.EF6N.N05	-	Tube bore 3.0
1.0/1.0 mm	049.EF6N.N10	049.EH6N.N10	Tube bore 3.0
2.0/1.0 mm	049.EF6N.N20	049.EH6N.N20	Tube bore 3.0
3.0/1.0 mm	049.EF6N.N30	049.EH6N.N30	Tube bore 3.0

Disclaimer: All flow rates shown were obtained pumping water at 20 °C (68 °F) with zero suction and delivery heads. Watson-Marlow, Pumpsil, PureWeld XL, Bioprene and Marprene are trademarks of Watson-Marlow Limited. Disclaimer: The information contained in this document is believed to be correct but Watson-Marlow Limited accepts no liability for any errors it contains, and reserves the right to alter specifications without notice. GORE and STA-PURE are trademarks of W. L. Gore & Associates. Please state the product code when ordering pumps and tubing.

wmfts.com/global



31 July 2023